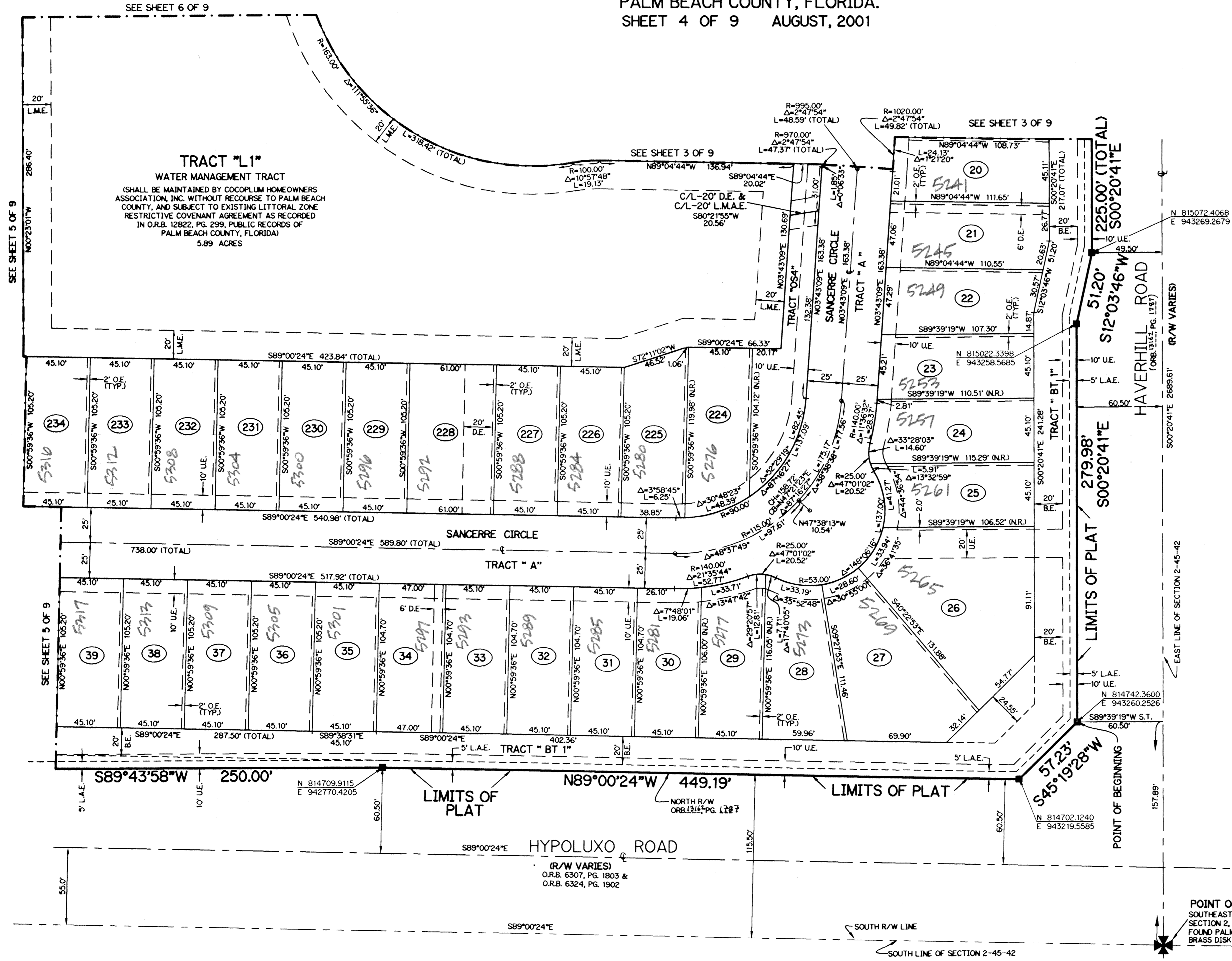
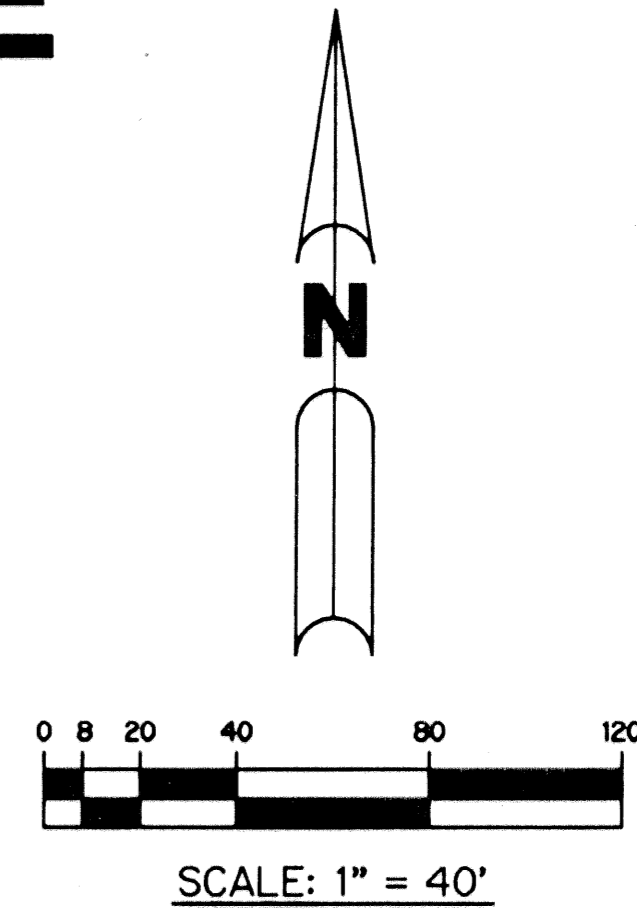


HYPOLUXO/HAVERHILL P.U.D. - PLAT ONE

PLANNED UNIT DEVELOPMENT
A PARCEL OF LAND LYING IN
SECTION 2, TOWNSHIP 45 SOUTH, RANGE 42 EAST,
PALM BEACH COUNTY, FLORIDA.
SHEET 4 OF 9 AUGUST, 2001

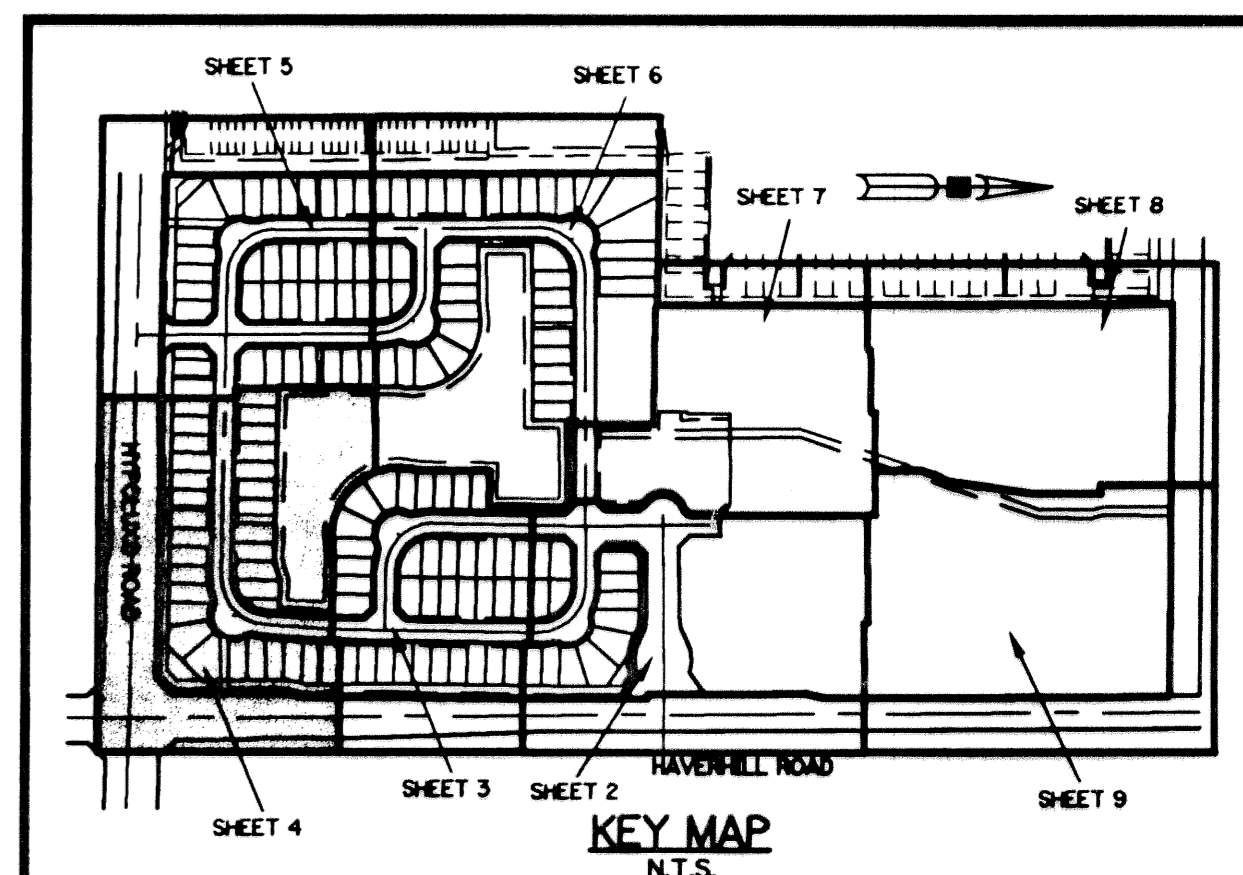


TRACT "L1"
WATER MANAGEMENT TRACT
(SHALL BE MAINTAINED BY COCOPUM HOMEOWNERS ASSOCIATION, INC. WITHOUT RECOURSE TO PALM BEACH COUNTY, AND SUBJECT TO EXISTING LITTORAL ZONE RESTRICTIVE COVENANT AGREEMENT AS RECORDED IN O.R.B. 12822, PG. 299, PUBLIC RECORDS OF PALM BEACH COUNTY, FLORIDA)
5.89 ACRES

NOTE:
COORDINATES SHOWN ARE GRID COORDINATES DATUM = NAD 83 (1980 ADJUSTMENT)
ZONE = FLORIDA EAST ZONE
LINEAR UNIT = U.S. SURVEY FEET
COORDINATE SYSTEM 1983 STATE PLANE TRANSVERSE MERCATOR PROJECTION
ALL DISTANCES ARE GROUND
SCALE FACTOR = 1.00003481
NO ROTATION: PLAT BEARING = GRID BEARING

- LEGEND:**
- - SET PERMANENT REFERENCE MONUMENT, LB-6674
 - - PERMANENT CONTROL POINT, LB-6674
 - △ - DELTA ANGLE
 - BE - BUFFER EASEMENT
 - CL - CENTERLINE
 - CB - CHORD BEARING
 - CH - CHORD LENGTH
 - DB - DEED BOOK
 - DE - DRAINAGE EASEMENT
 - AL - ARC LENGTH
 - L.A.E. - LIMITED ACCESS EASEMENT
 - L.M.A.E. - LAKE MAINTENANCE ACCESS EASEMENT
 - L.M.E. - LAKE MAINTENANCE EASEMENT
 - L.W.D.D. - LAKE WORTH DRAINAGE DISTRICT
 - NR - NOT RADIAL
 - N.T.S. - NOT TO SCALE
 - O.R.B. - OFFICIAL RECORD BOOK
 - P.B. - PLAT BOOK
 - PGS. - PAGES
 - P.S.M. - PROFESSIONAL SURVEYOR AND MAPPER
 - R - RADIUS
 - R/W - RIGHT-OF-WAY
 - S.T. - SURVEY TIE
 - U.E. - UTILITY EASEMENT
 - O.E. - OVERHANG EASEMENT
 - N 814602.8657
E 785753.1680 - DENOTES STATE PLANE COORDINATES

THIS INSTRUMENT PREPARED BY
WILBUR F. DIVINE, P.S.M. 4190, STATE OF FLORIDA
LAWSON, NOBLE AND WEBB, INC., LB-6674
ENGINEERS PLANNERS SURVEYORS
420 COLUMBIA DRIVE, SUITE 110
WEST PALM BEACH, FLORIDA



SUBDIVISION: HYPOLUXO/HAVERHILL PUD
BOOK: 94
FLOOD ZONE: B
Q.T.A.D.#: 34
TAZ: 43A
PUD NAME: HYPOLUXO/HAVERHILL
PAGE: 34
FLOOD MAP#: 175B
ZONING: PUD
ZIP CODE: 33403